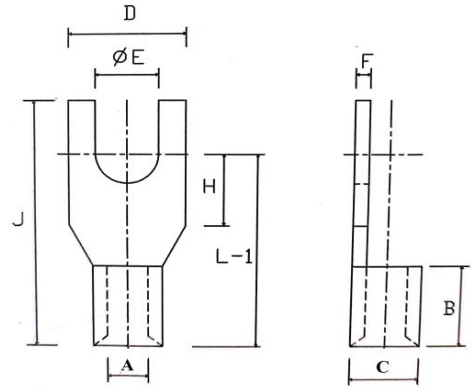


COPPER FORK TYPE TERMINAL

Material Copper IS : 1897 :: Finished Electro Tinned



All dimensions in mm

Size mm ²	E	A	C	D	F	B	H	L-1	J	CORDLUG CAT NO.
1.5	3.5	1.6	3.2	6.8	0.8	4.0	4.8	8.8	13.0	L7249
1.5	2.8	1.7	3.5	5.2	0.8	7	8		17	RL7249
1.5	3	2.0	2.8	6.2	0.8	5.0	3.1	10.5	13.0	L7250
2.5	3.5	2.3	3.9	6.5	0.8	5.0	4.3	11.8	15.0	L7251
2.5	5.0	2.6	4.6	10.6	1.0	6.2	6.2	12.4	21.0	L7280
4.6	3.1	3.5	5.5	6.0	1.0	6.0	5.5	11.5	15.0	L7252
4.6	3.5	3.5	5.5	6.0	1.0	6.0	5.0	11.0	15.0	L7253
10.0	6.5	4.5	6.9	16.0	1.2	8.0	11.0	19.0	27.0	L7254
10.0	8.2	4.5	6.9	16.0	1.2	8.0	11.0	19.0	27.0	L7255