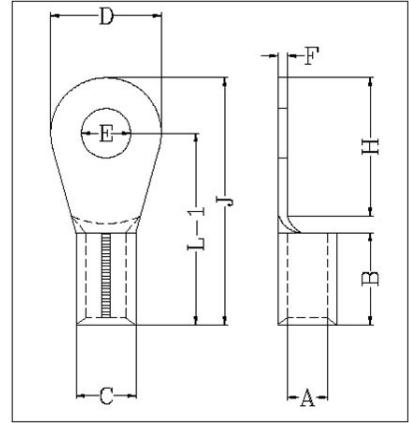


## COPPER RING TYPE TERMINAL

Material Copper IS : 1897 :: Finished Electro Tinned

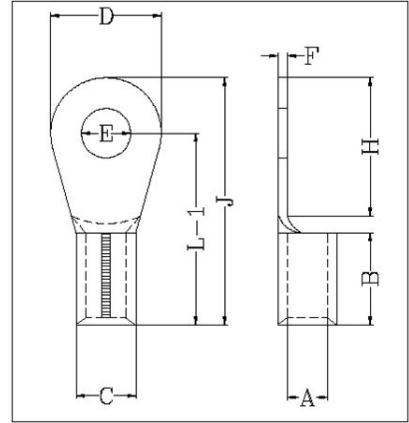


All dimensions in mm

Size mm <sup>2</sup>	E	A	C	D	F	B	H	L-1	J	CORDLUG CAT NO.
0.5	3.2	1.2	2.8	6.0	0.8	5.0	6.0	10.5	14	LR0.5 E-3
0.5	4.2	1.2	2.8	8.0	0.8	5.0	7.0	12.0	16	LR0.5 E-4
0.5	5.2	1.2	2.8	8.0	0.8	5.0	7.0	12.0	16	LR0.5 E-5
1	4.2	1.3	2.9	7.0	0.8	5.0	4.0	10.5	14	LR01 E-4
1.5	2.2	1.6	3.2	6.0	0.8	5.0	4.0	11.0	14.0	L7103
1.5	2.6	1.6	3.2	6.0	0.8	5.0	4.0	11.0	14.0	L7000
1.5	3.2	1.6	3.2	6.0	0.8	5.0	4.0	11.0	14.0	L7001
1.5	3.2	1.6	3.2	6.8	0.8	5.0	3.6	9.6	13.0	L7153
1.5	3.2	1.6	3.2	8.0	0.8	5.0	5.0	12.0	16.0	L7104
1.5	3.7	1.6	3.2	6.8	0.8	5.0	3.6	9.6	13.0	L7048
1.5	3.7	1.6	3.2	6.0	0.8	5.0	4.0	11.0	14.0	L7002
1.5	4.2	1.6	3.2	6.8	0.8	5.0	3.6	9.6	13.0	L7049
1.5	4.2	1.6	3.2	6.0	0.8	5.0	4.0	11.0	14.0	L7003
1.5	4.2	1.6	3.2	7.0	0.8	5.0	5.0	11.0	14.5	L7154
1.5	4.2	1.6	3.2	8.0	0.8	5.0	5.0	12.0	16.0	L7004
1.5	4.2	1.6	3.2	10.0	0.8	5.0	6.0	13.0	18.0	L7105
1.5	5.2	1.6	3.2	8.0	0.8	5.0	5.0	12.0	16.0	L7005
1.5	5.2	1.6	3.2	10.0	0.8	5.0	6.0	13.0	18.0	L7006
1.5	6.4	1.6	3.2	10.0	0.8	5.0	6.0	13.0	18.0	L7007
1.5	6.4	1.6	3.2	12.0	0.8	5.0	6.0	12.0	18.0	L7106
2.5	3.2	2.3	3.9	6.5	0.8	5.0	3.5	9.5	12.7	L7107
2.5	3.7	2.3	3.9	6.5	0.8	5.0	3.5	9.5	12.7	L7008
2.5	3.7	2.3	3.9	8.0	0.8	5.0	5.0	12.0	16.0	L7108
2.5	4.2	2.3	3.9	8.0	0.8	5.0	5.0	12.0	16.0	L7009

## COPPER RING TYPE TERMINAL

Material Copper IS : 1897 :: Finished Electro Tinned

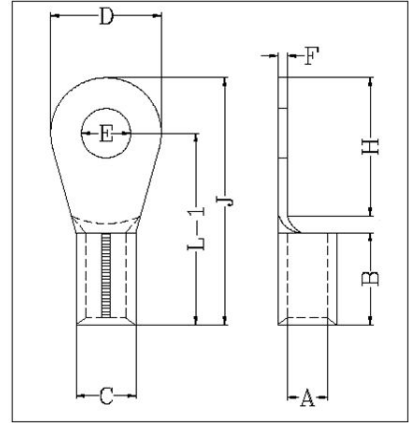


All dimensions in mm

Size mm <sup>2</sup>	E	A	C	D	F	B	H	L-1	J	CORDLUG CAT NO.
2.5	5.2	2.3	3.9	8.0	0.8	5.0	5.0	12.0	16.0	L7010
2.5	5.2	2.3	3.9	10.0	0.8	5.0	7.0	13.0	18.0	L7109
2.5	5.2	2.3	3.9	12.0	0.8	5.0	9.0	16.0	22.0	L7110
2.5	6.4	2.3	3.9	10.0	0.8	5.0	7.0	13.0	18.0	L7011
2.5	6.4	2.3	3.9	12.0	0.8	5.0	9.0	16.0	22.0	L7012
2.5	6.4	2.3	3.9	16.0	0.8	5.0	10.0	17.0	25.0	L7111
2.5	8.2	2.3	3.9	12.0	0.8	5.0	9.0	16.0	22.0	L7013
2.5	8.2	2.3	3.9	16.0	0.8	5.0	10.0	17.0	25.0	L7014
2.5	10.2	2.3	3.9	18.0	0.8	5.0	14.0	20.0	29.0	L7151
2.5	10.2	2.3	3.9	16.0	0.8	5.0	10.0	17.0	25.0	L7015
2.5	12.7	2.3	3.9	18.0	0.8	5.0	14.0	20.0	29.0	L7047
4.6	4.2	3.5	5.5	8.0	1.0	6.0	5.0	13.0	17.0	L7155
4.6	4.2	3.5	5.5	10.0	1.0	6.0	5.0	14.0	19.0	L7112
4.6	5.2	3.5	5.5	8.0	1.0	6.0	5.0	13.0	17.0	L7050
4.6	5.2	3.5	5.5	8.0	1.0	6.0	9.8	18.8	22.8	L7157
4.6	5.2	3.5	5.5	10.0	1.0	6.0	5.0	14.0	19.0	L7016
4.6	5.2	3.5	5.5	12.0	1.0	6.0	6.0	14.0	20.0	L7113
4.6	5.2	3.5	5.5	12.0	1.0	6.0	7.0	16.0	22.0	L7114
4.6	6.4	3.5	5.5	12.0	1.0	6.0	6.0	14.0	20.0	L7017
4.6	6.4	3.5	5.5	12.0	1.0	6.0	7.0	16.0	22.0	L7019
4.6	6.4	3.5	5.5	14.0	1.0	6.0	10.5	18.5	25.5	L7115
4.6	8.2	3.5	5.5	12.0	1.0	6.0	6.0	14.0	20.0	L7018
4.6	8.2	3.5	5.5	18.0	1.0	6.0	12.0	21.0	30.0	L7117
4.6	8.2	3.5	5.5	14.0	1.0	6.0	10.5	18.5	25.5	L7020

## COPPER RING TYPE TERMINAL

Material Copper IS : 1897 :: Finished Electro Tinned

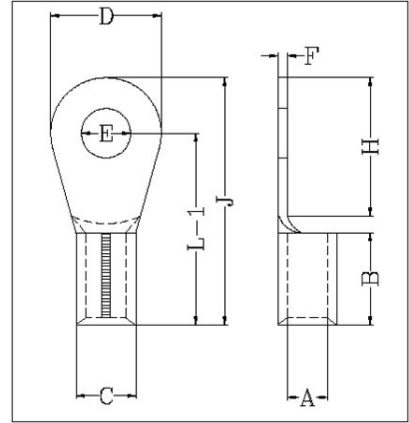


All dimensions in mm

Size mm <sup>2</sup>	E	A	C	D	F	B	H	L-1	J	CORDLUG CAT NO.
4.6	8.2	3.5	5.5	14.0	1.0	6.0	13.0	22.0	30.0	L7116
4.6	9.7	3.5	5.5	14.0	1.0	6.0	10.5	18.5	25.5	L7021
4.6	10.2	3.5	5.5	18.0	1.0	6.0	12.0	21.0	30.0	L7023
4.6	10.2	3.5	5.5	16.0	1.0	6.0	13.0	22.0	30.0	L7022
4.6	12.7	3.5	5.5	18.0	1.0	6.0	12.0	21.0	30.0	L7024
10.0	4.2	4.3	6.3	10.0	1.0	8.0	4.0	15.0	20.0	L7119
10.0	4.2	4.3	6.3	10.0	1.0	8.0	7.0	17.0	22.0	L7118
10.0	5.2	4.3	6.3	10.0	1.0	8.0	7.0	17.0	22.0	L7025
10.0	5.2	4.3	6.3	10.0	1.0	8.0	4.0	15.0	20.0	L7026
10.0	6.4	4.3	6.3	12.0	1.0	8.0	7.0	17.0	23.0	L7120
10.0	8.2	4.3	6.3	16.0	1.0	8.0	7.0	19.0	27.0	L7121
10.0	8.2	4.3	6.3	18.0	1.0	8.0	9.0	21.0	30.0	L7122
10.0	10.2	4.3	6.3	22.0	1.0	8.0	20.0	33.0	34.0	L7123
10.0	10.2	4.3	6.3	18.0	1.0	8.0	9.0	21.0	30.0	L7027
10.0	12.7	4.3	6.3	22.0	1.0	8.0	10.0	23.0	34.0	L7028
16.0	5.2	5.6	8.0	10.0	1.2	10.0	6.0	19.0	24.0	L7124
16.0	5.2	5.6	8.0	12.0	1.2	10.0	6.0	20.0	26.0	L7125
16.0	6.4	5.6	8.0	12.0	1.2	10.0	6.0	20.0	26.0	L7029
16.0	6.4	5.6	8.0	16.0	1.2	10.0	8.0	22.0	30.0	L7126
16.0	8.2	5.6	8.0	16.0	1.2	10.0	8.0	22.0	30.0	L7030
16.0	8.2	5.6	8.0	18.0	1.2	10.0	10.0	24.0	33.0	L7127
16.0	9.7	5.6	8.0	16.0	1.2	10.0	8.0	22.0	30.0	L7031
16.0	10.2	5.6	8.0	22.0	1.2	10.0	8.0	24.0	35.0	L7128
16.0	10.4	5.6	8.0	18.0	1.2	10.0	10.0	24.0	33.0	L7032

## COPPER RING TYPE TERMINAL

Material Copper IS : 1897 :: Finished Electro Tinned

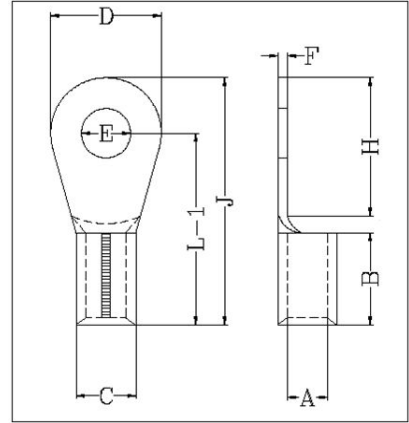


All dimensions in mm

Size mm <sup>2</sup>	E	A	C	D	F	B	H	L-1	J	CORDLUG CAT NO.
16.0	12.7	5.6	8.0	22.0	1.2	10.0	8.0	24.0	35.0	L7033
25.0	6.4	7.5	11.1	16.0	1.8	11.0	10.0	25.0	33.0	L7130
25.0	6.4	7.5	11.1	12.0	1.8	11.0	10.0	25.0	31.0	L7156
25.0	6.4	7.5	11.1	16.0	1.8	11.0	6.0	22.0	30.0	L7129
25.0	8.2	7.5	11.1	16.0	1.8	11.0	6.0	22.0	30.0	L7034
25.0	8.2	7.5	11.1	12.0	1.8	11.0	10.0	25.0	31.0	L7051
25.0	8.2	7.5	11.1	16.0	1.8	11.0	10.0	25.0	33.0	L7036
25.0	10.2	7.5	11.1	18.0	1.8	11.0	9.0	25.0	34.0	L7131
25.0	10.2	7.5	11.1	16.0	1.8	11.0	6.0	22.0	30.0	L7035
25.0	10.2	7.5	11.1	22.0	1.8	11.0	14.0	31.0	42.0	L7132
25.0	12.7	7.5	11.1	22.0	1.8	11.0	14.0	31.0	42.0	L7037
35.0	6.4	9.0	12.6	16.0	1.8	12.0	6.0	23.0	31.0	L7133
35.0	8.2	9.0	12.6	16.0	1.8	12.0	6.0	23.0	31.0	L7038
35.0	8.2	9.0	12.6	18.0	1.8	12.0	10.0	27.0	36.0	L7134
35.0	10.2	9.0	12.6	18.0	1.8	12.0	10.0	27.0	36.0	L7039
35.0	10.2	9.0	12.6	22.0	1.8	12.0	15.0	31.0	42.0	L7135
35.0	12.7	9.0	12.6	22.0	1.8	12.0	15.0	31.0	42.0	L7040
50.0	8.2	10.5	14.1	18.0	1.8	16.0	12.0	34.0	43.0	L7136
50.0	10.2	10.5	14.1	22.0	1.8	16.0	9.0	32.0	43.0	L7137
50.0	10.2	10.5	14.1	18.0	1.8	16.0	12.0	34.0	43.0	L7041
50.0	10.2	10.5	14.1	24.0	1.8	16.0	14.0	36.0	48.0	L7138
50.0	12.7	10.5	14.1	24.0	1.8	16.0	14.0	36.0	48.0	L7042
50.0	16.2	10.5	14.1	32.0	1.8	16.0	15.0	38.0	54.0	L7139
70.0	10.2	12.0	16.0	22.0	2.0	18.0	11.0	36.0	47.0	L7140

## COPPER RING TYPE TERMINAL

Material Copper IS : 1897 :: Finished Electro Tinned



All dimensions in mm

Size mm <sup>2</sup>	E	A	C	D	F	B	H	L-1	J	CORDLUG CAT NO.
70.0	12.7	12.0	16.0	24.0	2.0	18.0	10.0	36.0	48.0	L7141
70.0	12.4	12.0	16.0	22.0	2.0	18.0	11.0	36.0	47.0	L7043
70.0	16.2	12.0	16.0	28.0	2.0	18.0	16.0	40.0	54.0	L7142
95.0	10.2	13.5	18.1	24.0	2.3	20.0	12.0	38.0	50.0	L7144
95.0	10.2	13.5	18.1	22.0	2.3	20.0	10.0	35.0	46.0	L7143
95.0	12.7	13.5	18.1	24.0	2.3	20.0	12.0	38.0	50.0	L7044
95.0	16.2	13.5	18.1	28.0	2.3	20.0	17.0	44.0	58.0	L7145
120.0	12.7	15.0	20.2	26.0	2.6	22.0	7.0	39.0	52.0	L7146
120.0	16.2	15.0	20.2	32.0	2.6	22.0	19.0	48.0	64.0	L7147
120.0	20.3	15.0	20.2	40.0	2.6	22.0	20.0	52.0	72.0	L7148
150.0	12.7	16.5	23.7	34.0	3.6	24.0	16.0	49.0	66.0	L7149
150.0	16.2	16.5	23.7	34.0	3.6	24.0	16.0	49.0	66.0	L7045
150.0	16.2	16.5	23.7	40.0	3.6	24.0	20.0	54.0	74.0	L7150
150.0	20.3	16.5	23.7	40.0	3.6	24.0	20.0	54.0	74.0	L7046